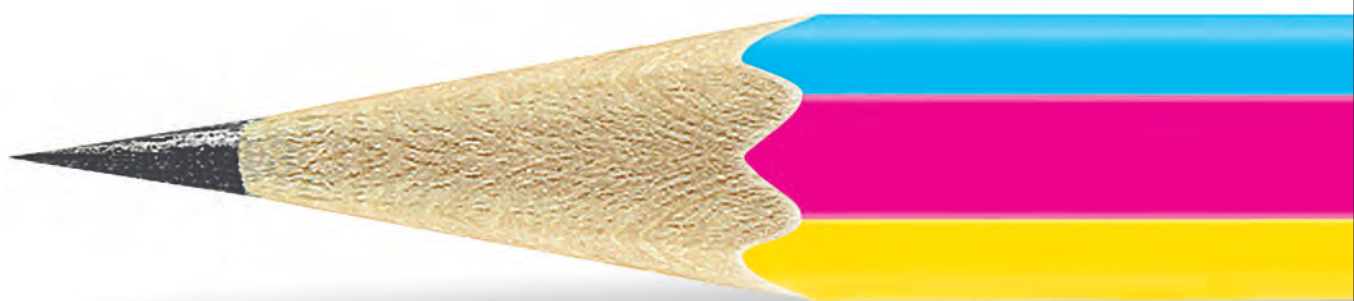




It can't get Sharper than this



Full HD flexo combined with Inline UV2 technology
gives you 6 unique advantages
Now get an edge over your competitors



ABOUT US

We began our operations in 1989 as an engraving house. In 1995, we established India's first Electro - Mechanical Engraving House, which was followed by introduction of laser engraving technology. We have been pioneers in bringing the latest and the best technology & softwares so as to give our esteemed clients an edge over their competitors.

In tune with contemporary times we acquired flexography, a technology with a very impressive growth in terms of quality and productivity, widely used for packaging production in different applications. A step ahead in flexography, HD Flexo combined with Inline UV2 brings significant sustainability benefits as well, by delivering near-offset quality across all flexo print applications.



GRAPHIC DESIGN STUDIO

We are equipped with a full-fledged graphic design studio with Esko graphic work stations powered by specialized Esko softwares & manned by highly skilled designers, which are comprehensively integrated to adapt your flexo artworks. Our expertise lies in adapting complex flexo artworks to give the best end results. We firmly believe in delivering quality on time, every time.

DIGITAL IMAGING: (CDI)

With Cyrel Digital Imager (CDI), the user is benefited with a fully distributed digital work flow. The productivity & quality of CDI benefits the entire packaging value chain by:

- ▶ Reduced cycle time
- ▶ Higher quality graphics
- ▶ Consistent colour reproduction

This helps in getting the product quickly on the shelf and also eliminates film based consumables & errors. The usage of digital plate results in reduced dot gain, higher resolution, finer highlights and better line work. It is consistent throughout the process from run to run allowing the printer to reduce waste.

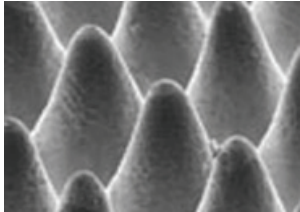
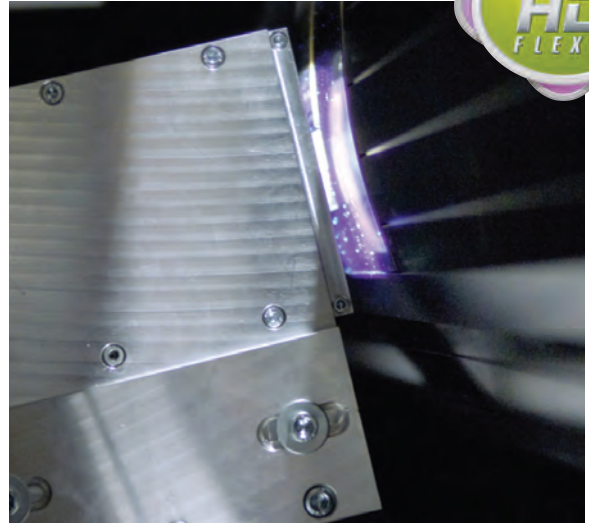


CDI-SPARK 4260

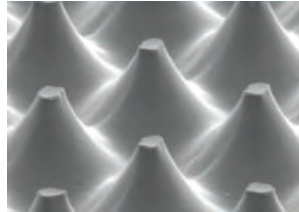
- ▶ Highest quality flexo applications, primarily in the flexible packaging and folding carton markets.
- ▶ Larger size plates 42"x60" (1067mmx1524mm).
- ▶ Enables smooth vignettes, highlights, shadows and also adjusts imaging resolution from job to job so as to produce sharper and accurate images.
- ▶ The automation leads maximum throughput at minimum operator intervention subsequently removing potential sources of error.

INLINE UV2

The new inline UV2 offers the flexibility to select the type of print dot, either round-top or flat-top, according to the specific job requirement. With this new found flexibility, printers can offer their clients the best of both worlds in terms of dot quality. Inline UV2, offers six unique advantages.



Round Top Dots



Flat Top Dots

SIX UNIQUE ADVANTAGES

Strong colours in contrast with light tones

Highest ink transfer
 Left: Standard solid
 Right: Full HD Flexo Microcells



Natural image reproduction

Smooth transitions

Image details

Strong homogeneity improvement of white printing

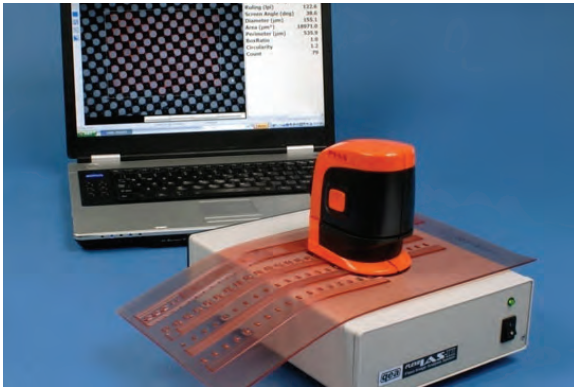
PLATE PROCESSING:

Shilp has installed state of the art automatic flow-line Degraf 405 DW plate processor size 1200mm x 1600mm (47" x 63"), which is equipped with double hydraulic & solvent tank system for processing of all kinds of digital imaged photo-polymer plates. It comes with an added facility of a unique washout rotating brushing system combined with double lateral oscillating movement.



The plate processor is controlled via a colour touch screen display with PLC control of all multi functions, where a specific maintenance program is embedded in the software. It also has an integrated solvent heater & chiller system with a solvent viscosity analysis & automatic replenishment.

- ▶ The dual back exposing system operated by 15 microcontrollers
- ▶ Drying system (Capacity: 950mmx2415mm) with thermostatically controlled drawers for removing solvent layers
- ▶ The processed plates are cut at required angles by the plate cutting machine
- ▶ We also provide UV coating plates, embossing blocks, letter press plates etc



QUALITY CONTROL

Shilp has a unique plate production control system to measure the following:

- ▶ Dot percentage
- ▶ Line screen
- ▶ Dot quality & parameters such as size, shape, location, screen angles etc
- ▶ Shore hardness of plates (Required for perfect reproduction)



Regd. Office and Works:

778/6, Pramukh Ind. Estate, Sola-Santej Road, Village-Rakanpur, Tal. Kalol, Dist. Gandhinagar - 382 721, Gujarat, India.

Mobile: +91-98250 48265, +91-99252 04061

e-mail: shilpflexo@gmail.com, satishmuralidharan@shilpgravures.com, pjshah@shilpgravures.com

website: www.shilpgravures.com

Mumbai Office:

e-mail: shilpmumbai@shilpgravures.com

Mobile: +91-98335 95982

Delhi Office:

e-mail: shilpdelhi@shilpgravures.com

Mobile: +91-98110 97366

Chennai Office:

e-mail: hariharan@shilpgravures.com

Mobile: +91-98400 77327